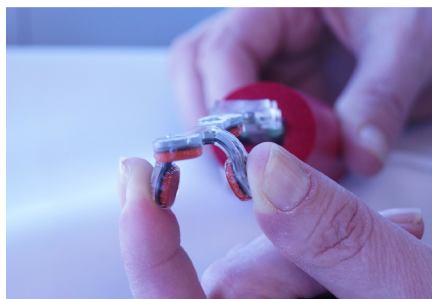


## SwallowSTRONG Mouthpiece Molding

There are a few simple steps to setting up your mouthpiece. Follow these steps to ensure your mouthpiece is properly molded.



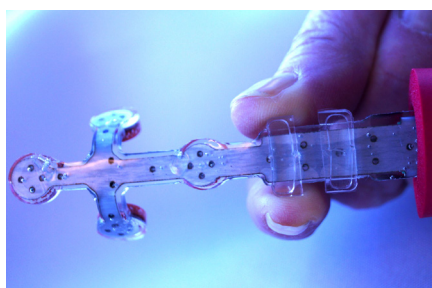
### Step 1:

Press the left and right sensors **toward the middle** (to get them out of the way initially).



### Step 2:

Visualize the oral cavity to get an idea of the **palatal and vaulted length**.



### Step 3:

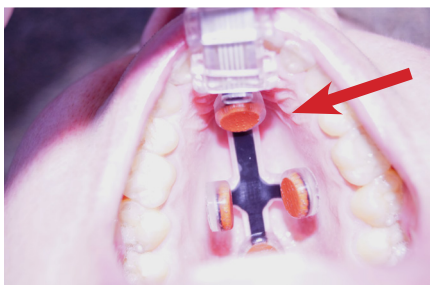
**Adjust the teeth guides** to a distance that will accommodate the upper teeth/gums.



### Step 4:

**Pre-mold the mouthpiece** using your gloved fingers to approximate the degree of vault.

# SwallowSTRONG Mouthpiece Molding



## Step 5:

Using trial and error, adjust the mouthpiece so the **anterior sensor is against the alveolar ridge** (at this point, ignore the other sensors).



The handle should be oriented horizontally as shown.

## Step 6:

Press the middle of the mouthpiece **against the hard palate** by applying pressure with your finger (you can also remove the mouthpiece and adjust it with your gloved fingers in more of a trial and error method).



Properly molded mouthpiece.

## Step 7:

**Adjust the posterior sensor** so it is flush against the hard palate.

## Step 8:

**Widen the right and left sensors** to meet the lateral aspects of the palate.